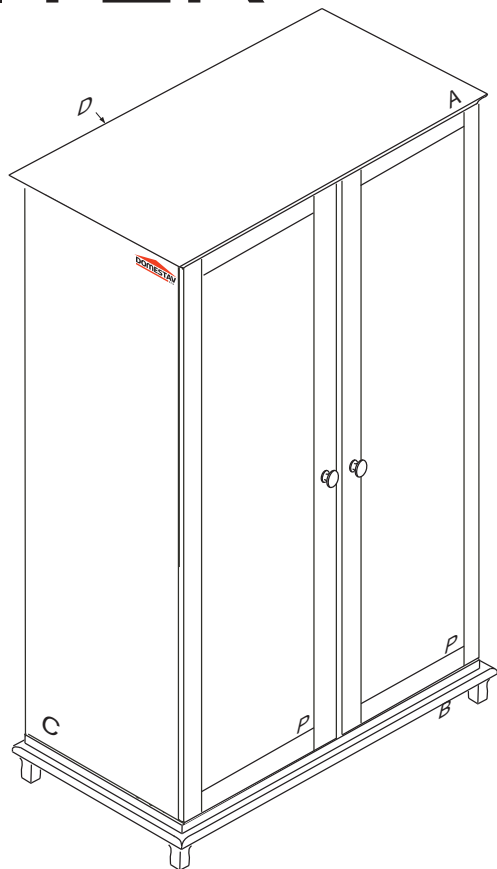


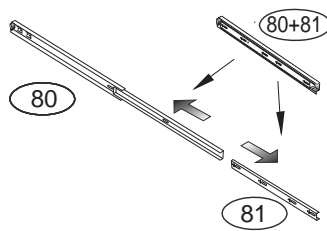
SOLITÉR

K 827-BC

960x640x1811

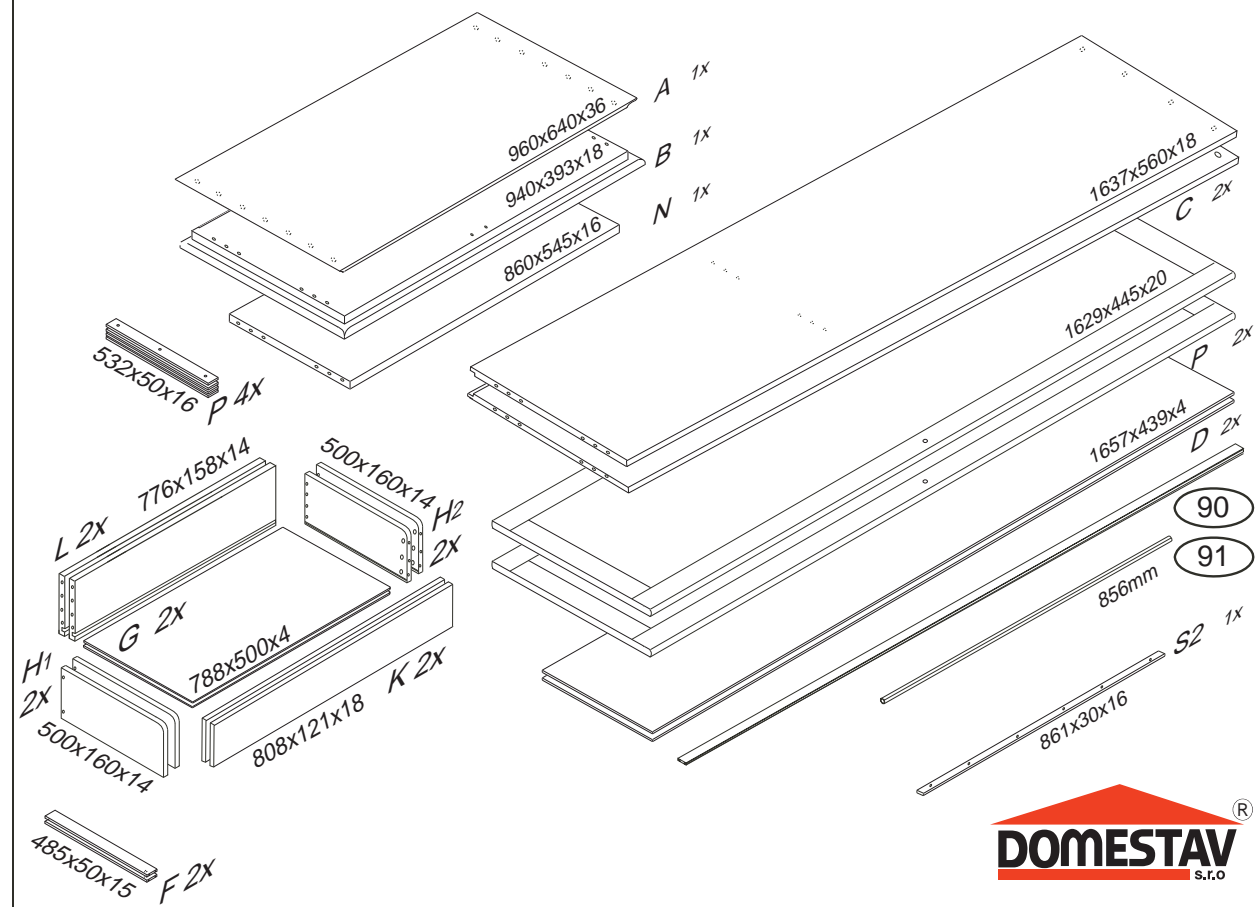


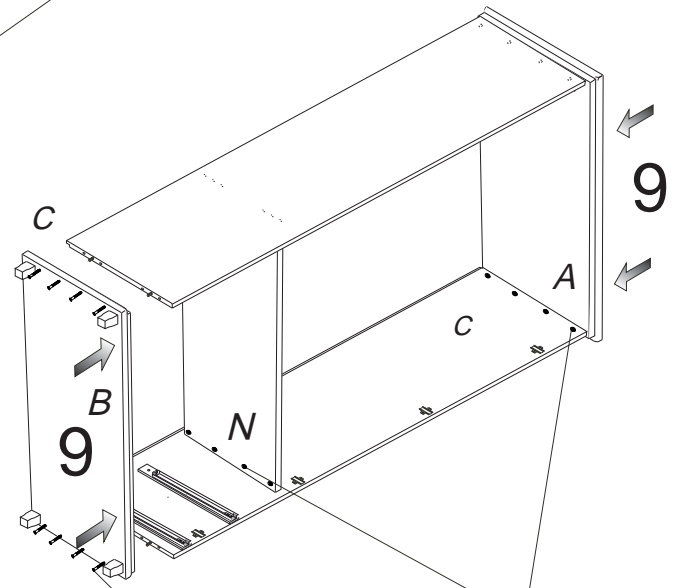
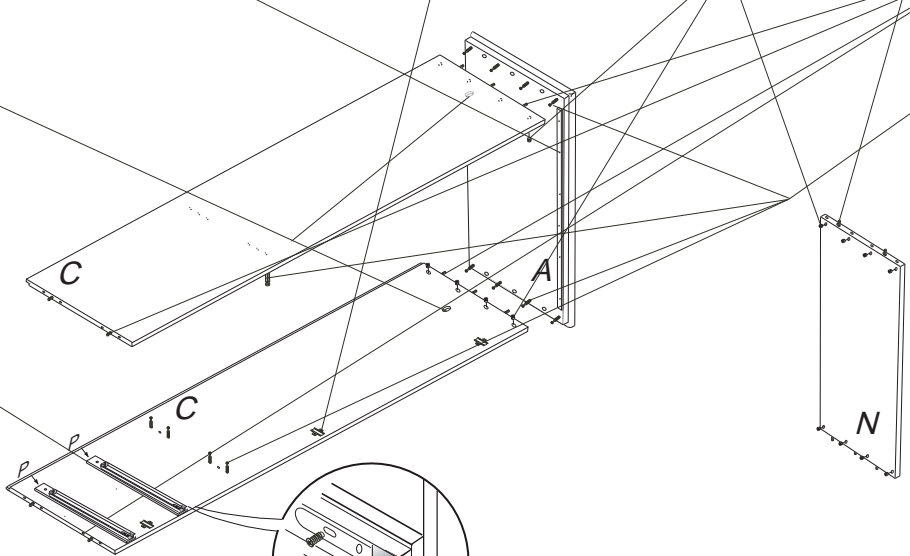
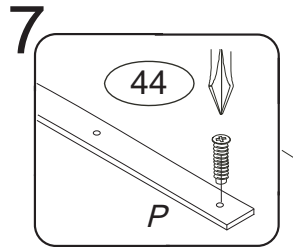
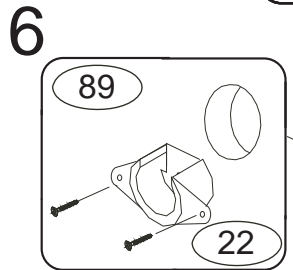
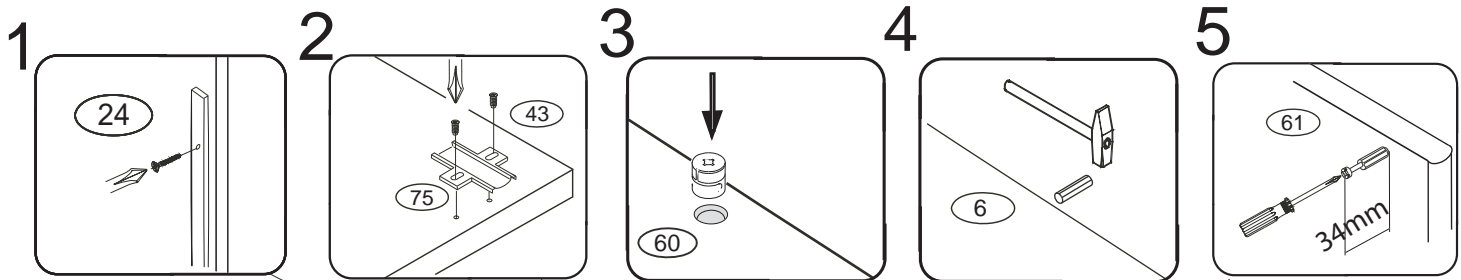
	3 x1 3mm	4 x1 4mm	6 x26 8x35mm	22 x16 3,5x16mm	23 x12 3,5x12mm	24 x6 4x30mm	
28 x2 M4x30mm	43 x12 EU 6x16mm	44 x12 EU 6x30mm	60 x18 15mm	61 x18 DU 2	67 x16	68 x12 12mm	69 x12 DU 1
70 x10 5x40mm	72 x8 7x70mm	76	75 x6 C01	80+81 x2 500mm	89 x2	92 x50 1,4x20mm	102 x2



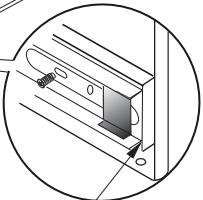
Před vyjmutím výsuvu nazdvihněte jazýček

! Kolíky vždy narazte nejprve do otvorů ve hranách dílců, je nutné je zarazit se stejným přesahem. V případě, že některý kolík přesahuje, je nutné jej zakrátit. Dílce srážejte kladivem pouze přes dřevěnou podložku.

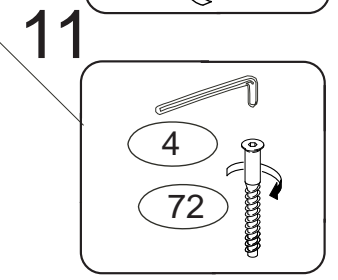
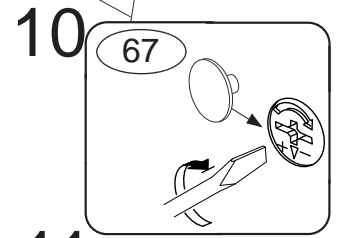
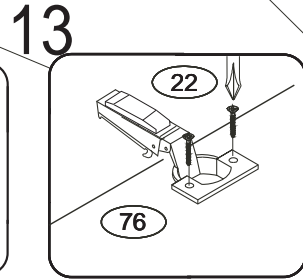
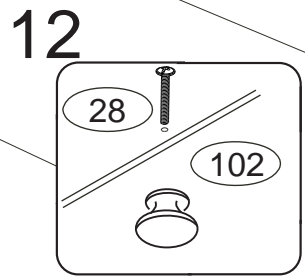
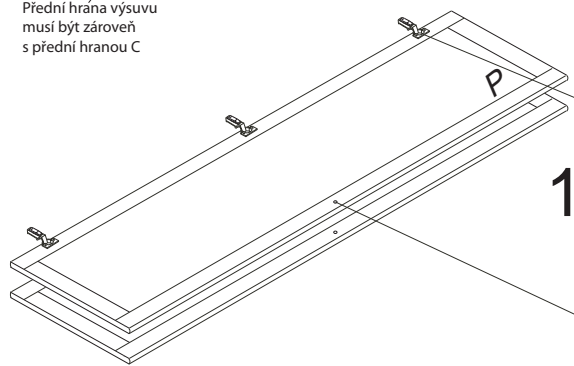
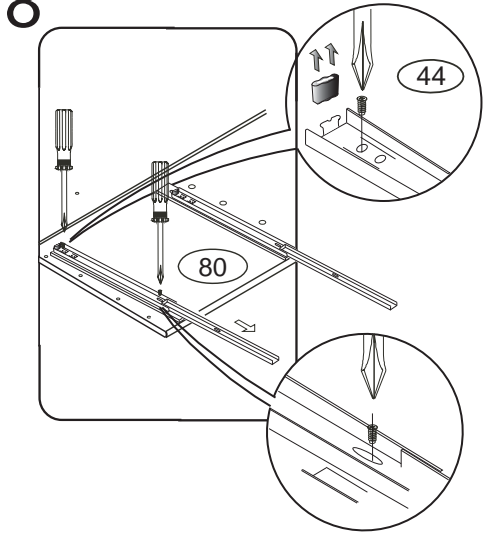




8 Pro snazší otevírání zásuvek
vyjměte gumový doraz pojezdu.



Přední hrana výsuvu
musí být zároveň
s přední hranou C



K 827

14

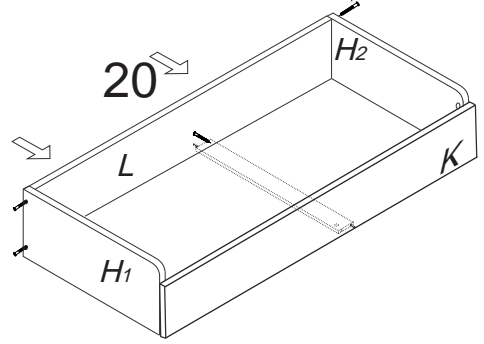
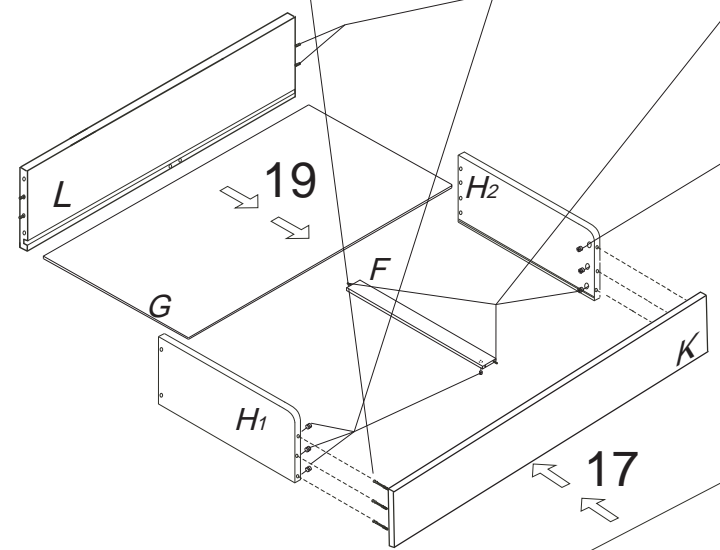
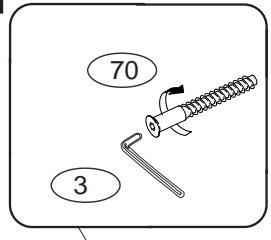
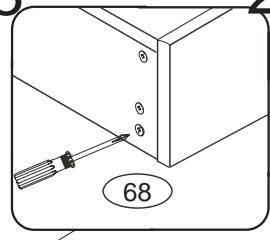
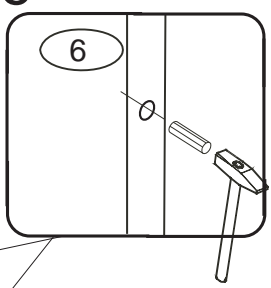
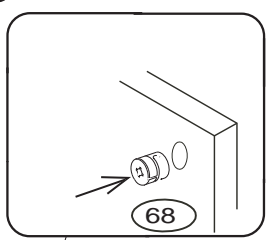
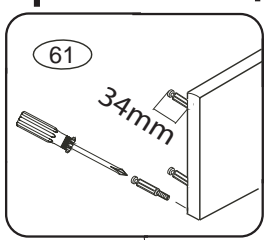
15

16

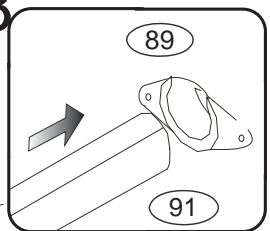
18

21

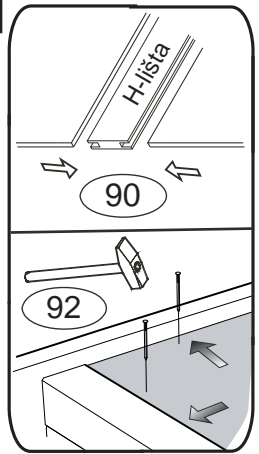
3/3



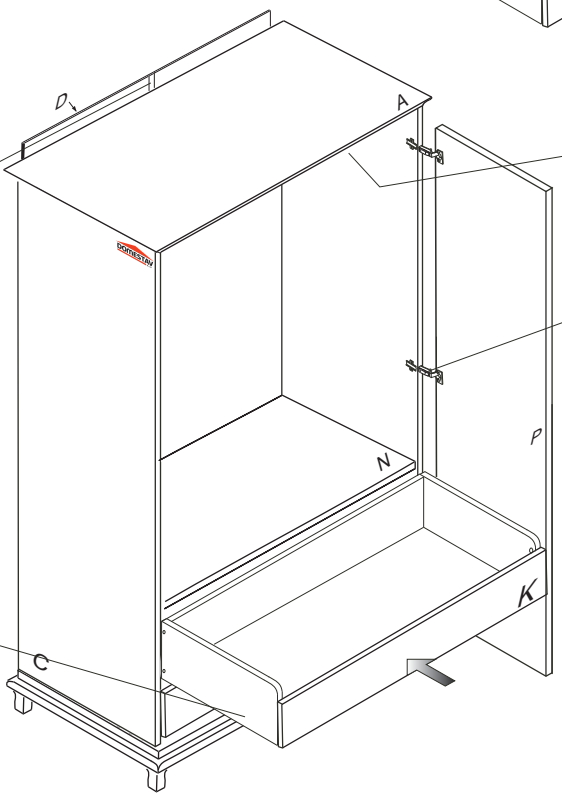
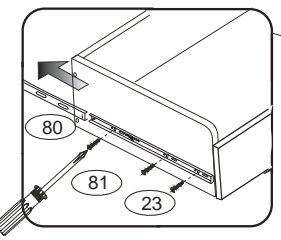
23



21



22



24

