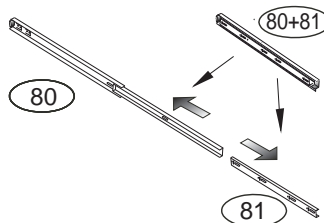
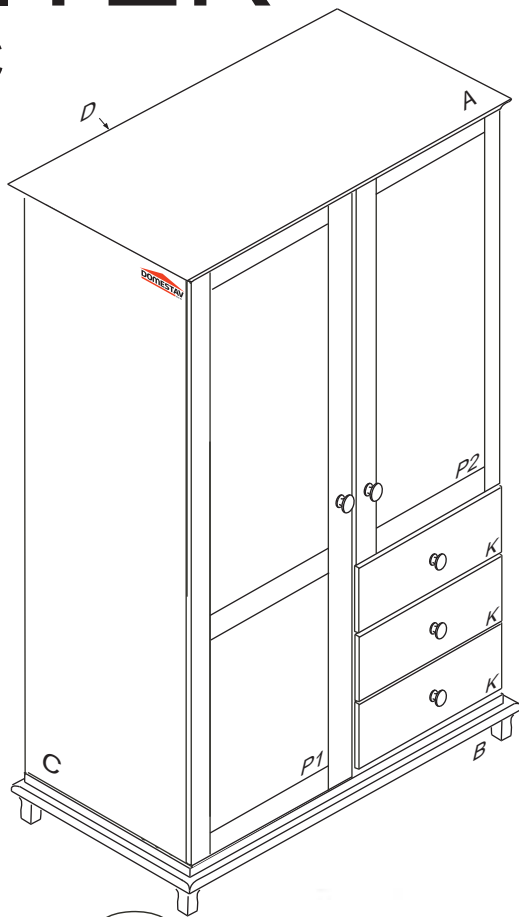


SOLITÉR

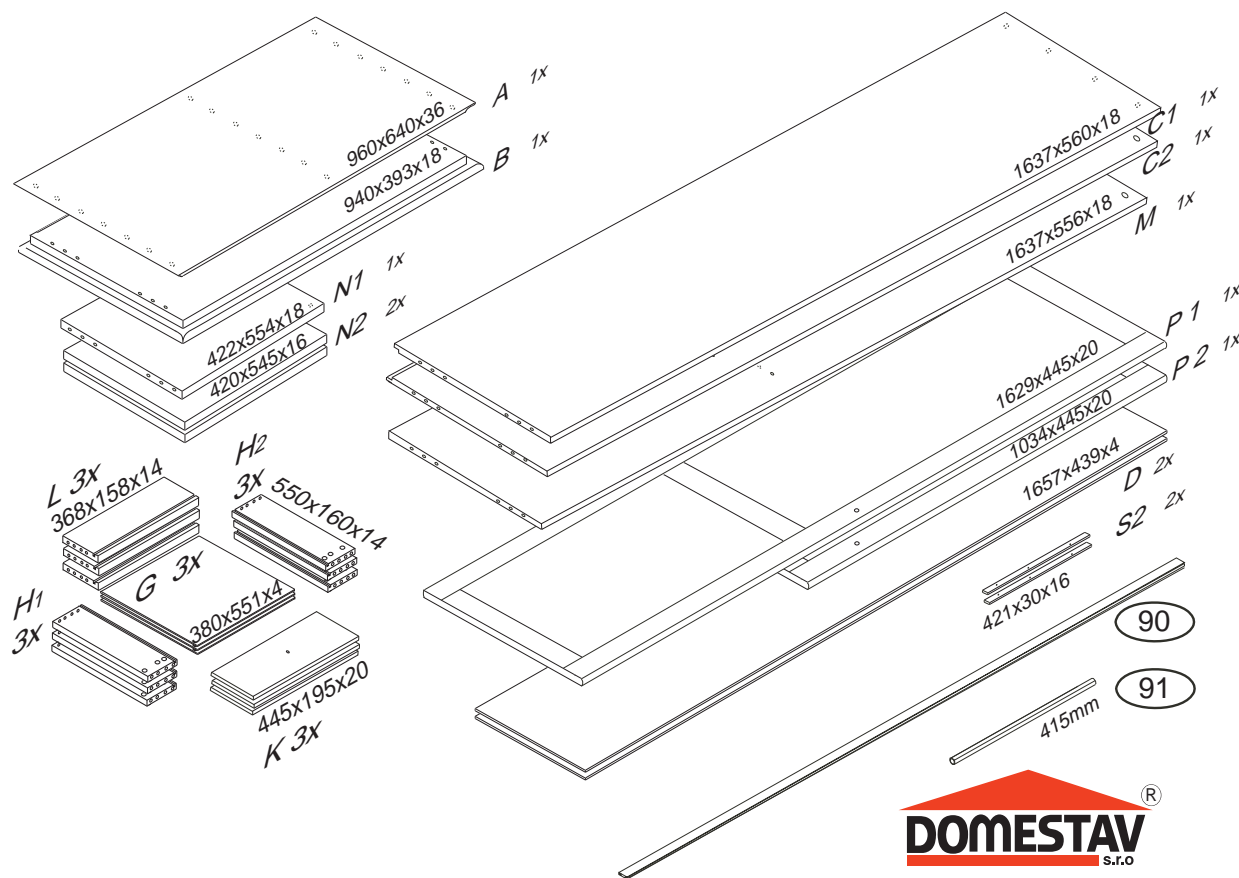
K 825-BC

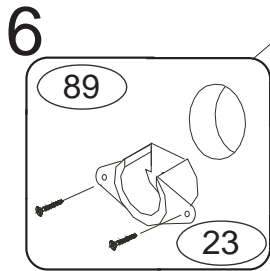
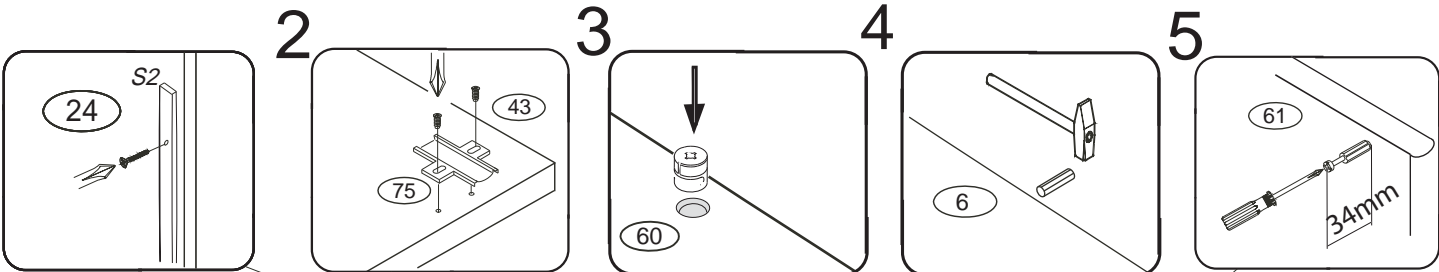
960x640x1811



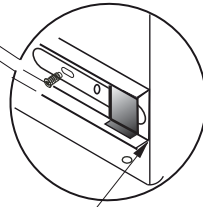
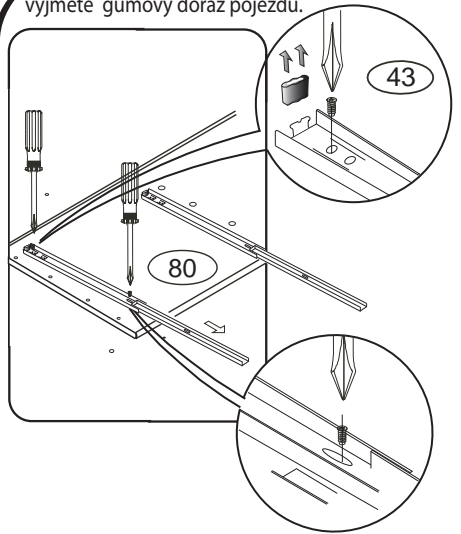
Kolíky vždy narazte nejprve do otvorů ve hranách dílců, je nutné je zarazit se stejným přesahem. V případě, že některý kolík přesahuje, je nutné jej zakrátit. Dílce srážejte kladivem pouze přes dřevěnou podložku.

	3 x1 3mm	4 x1 4mm	6 x37 8x35mm	21 x18 3,5x12mm	22 x10 3,5x16mm	23 x4 4x16mm	24 x8 4x30mm	
28 x5 M4x30mm	43 x28 EU 6x16mm	60 x16 15mm	61 x16 DU 2	67 x12	68 x18 12mm	69 x18 DU 1	70 x12 5x40mm	71 x8 7x50mm
72 x8 7x70mm	76	75 x5 C01	80+81 x3 550mm	85 x12	89 x2	92 x50 1,4x20mm	102 x5	

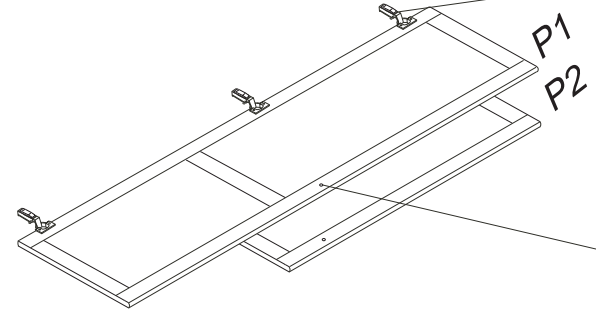
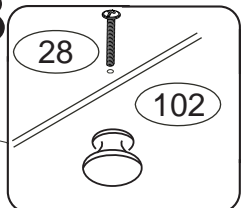
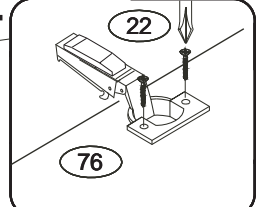
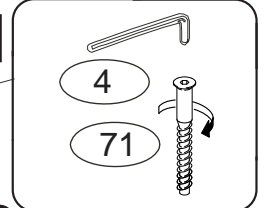
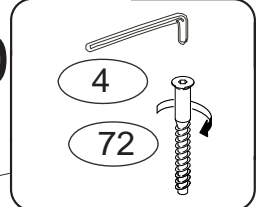
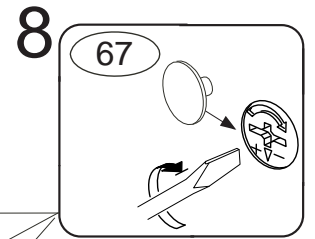
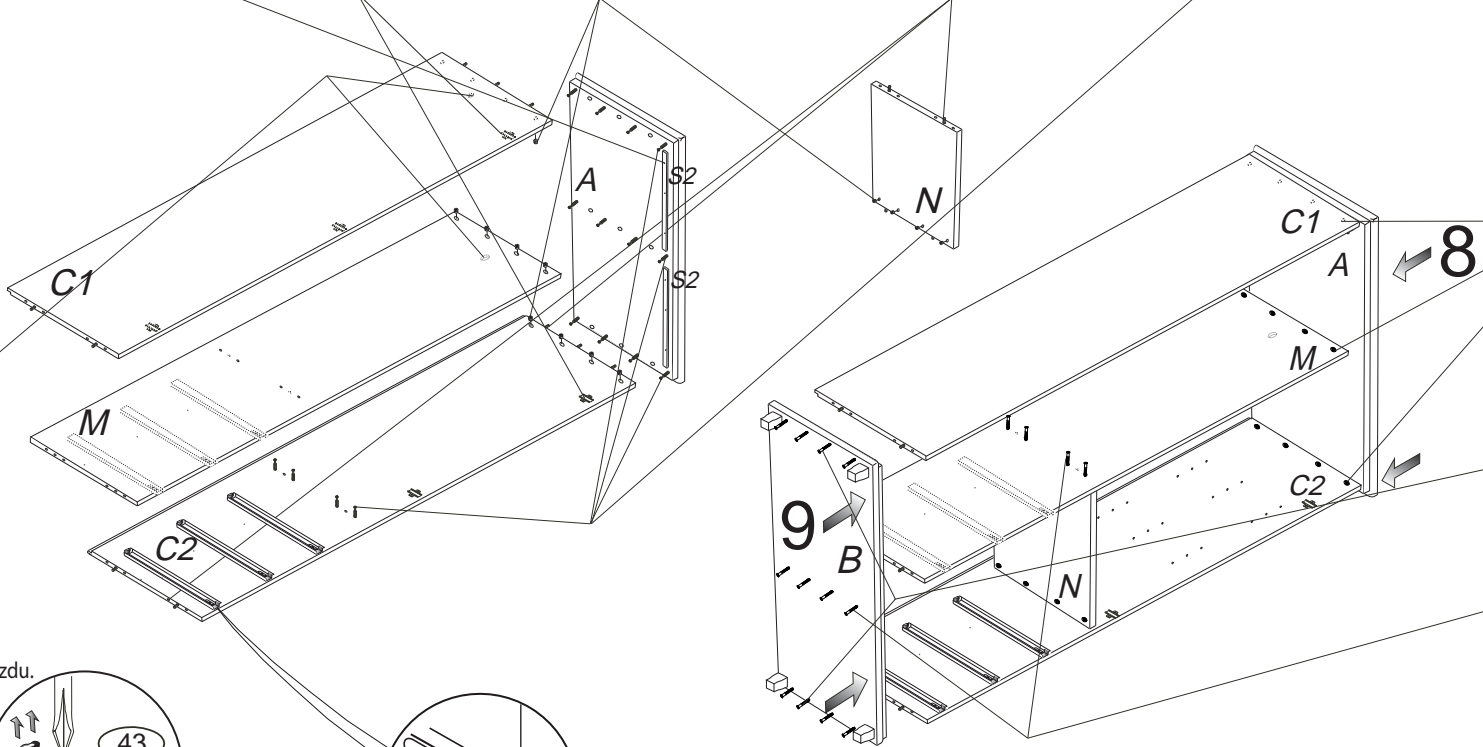




7 Pro snazší otevírání zásuvek
vyjměte gumový doraz pojezdu.

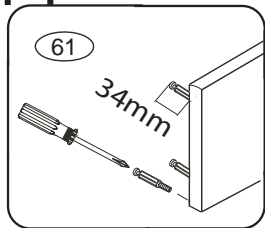


Přední hrana výsuvu
musí být zároveň
s přední hranou C2

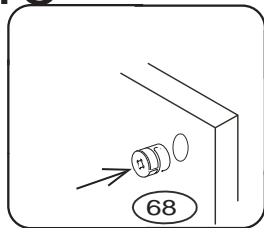


K 825

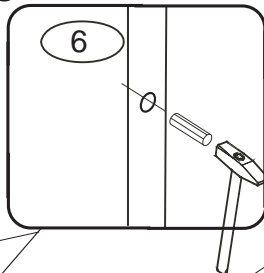
14



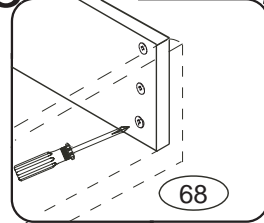
15



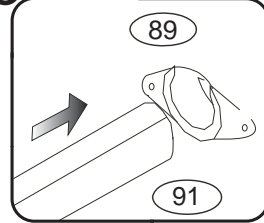
16



18

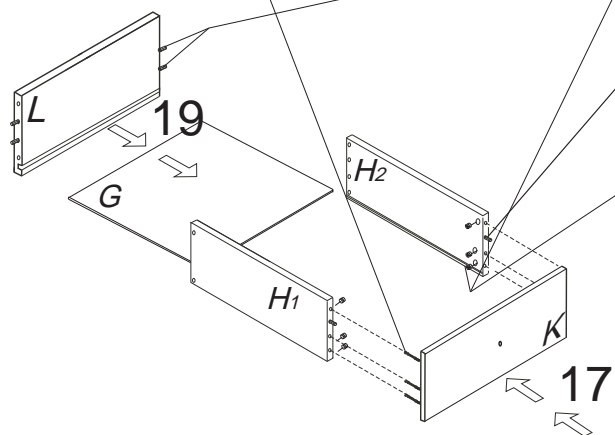
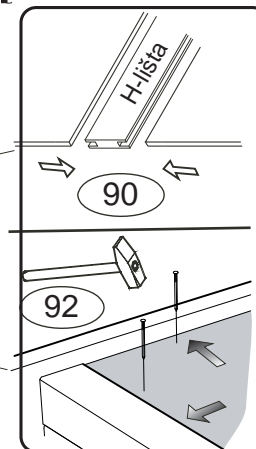


23



3/3

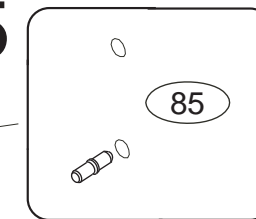
24



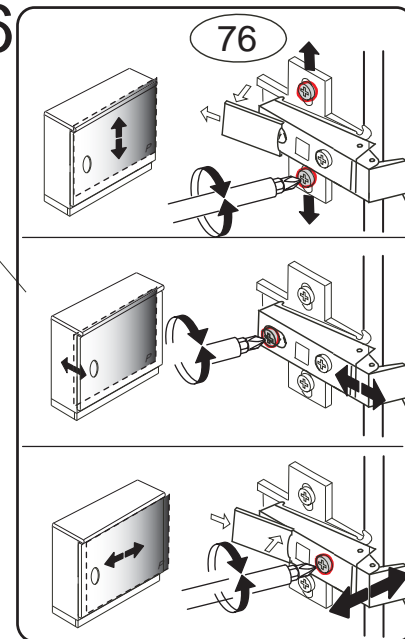
19

17

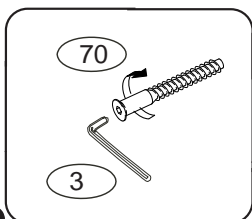
25



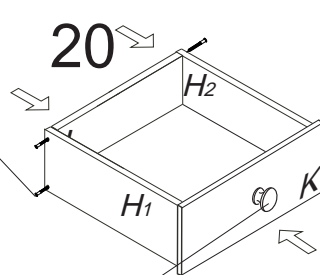
26



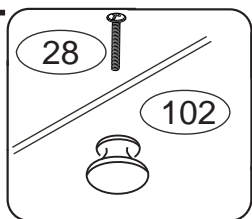
21



20



22



27

