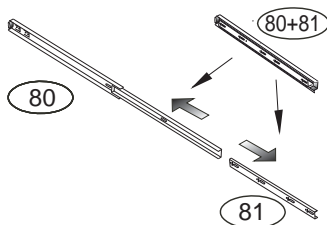
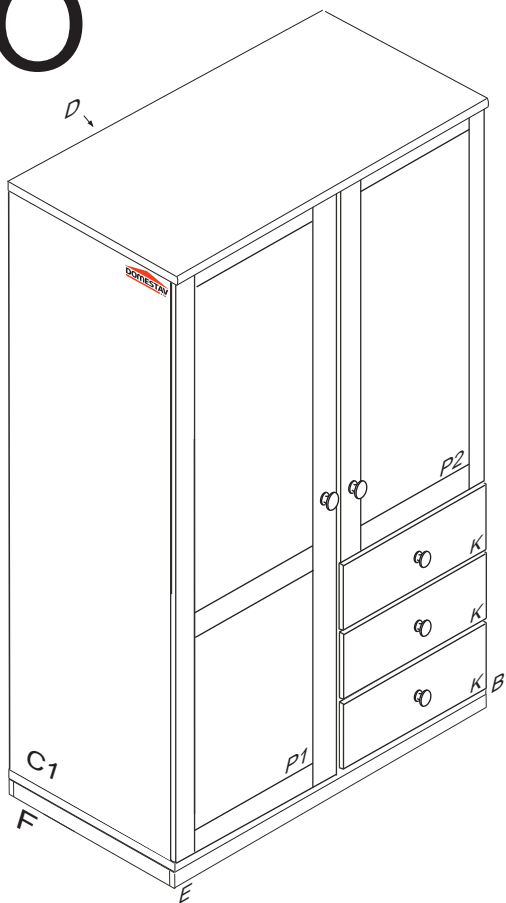


VARIO

K 800-BC

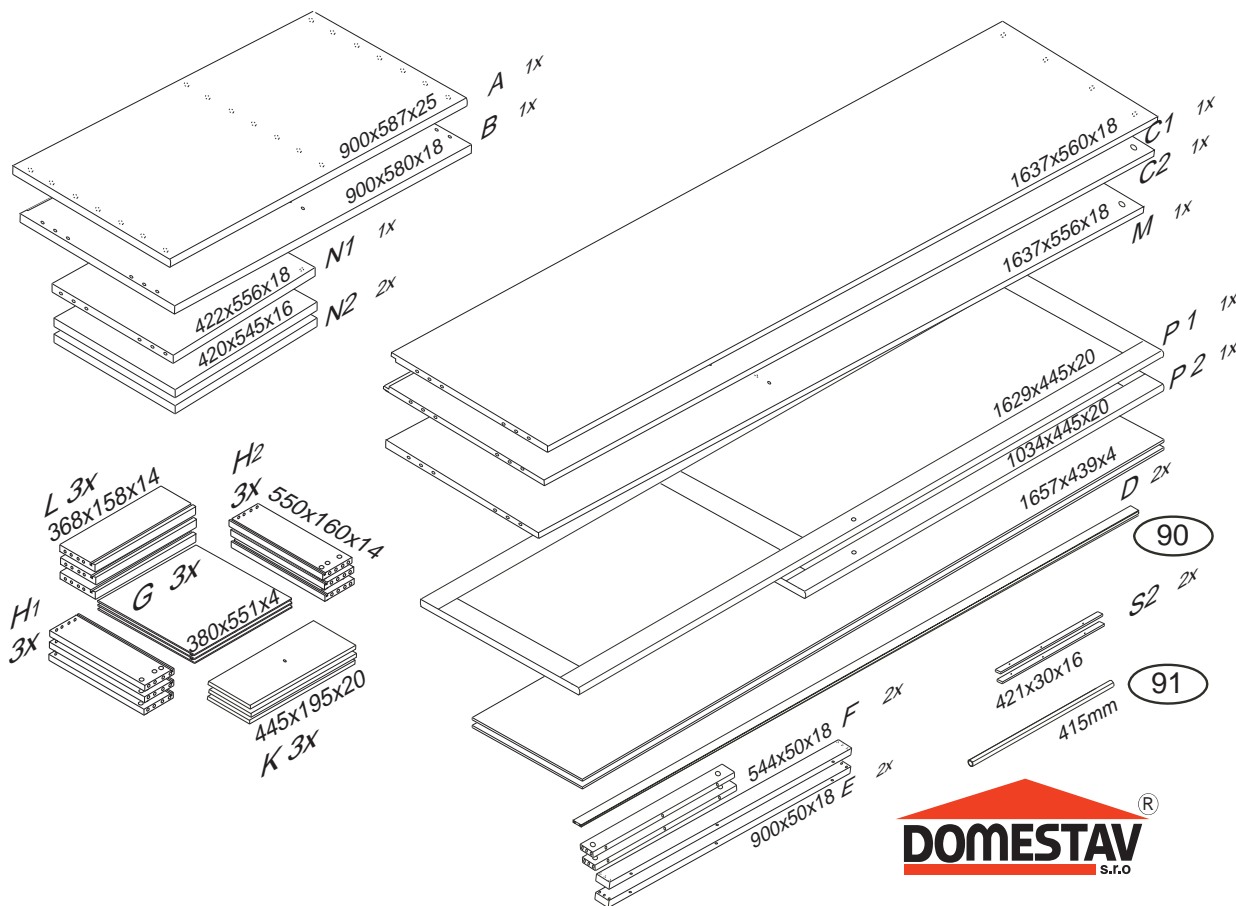
900x580x1730



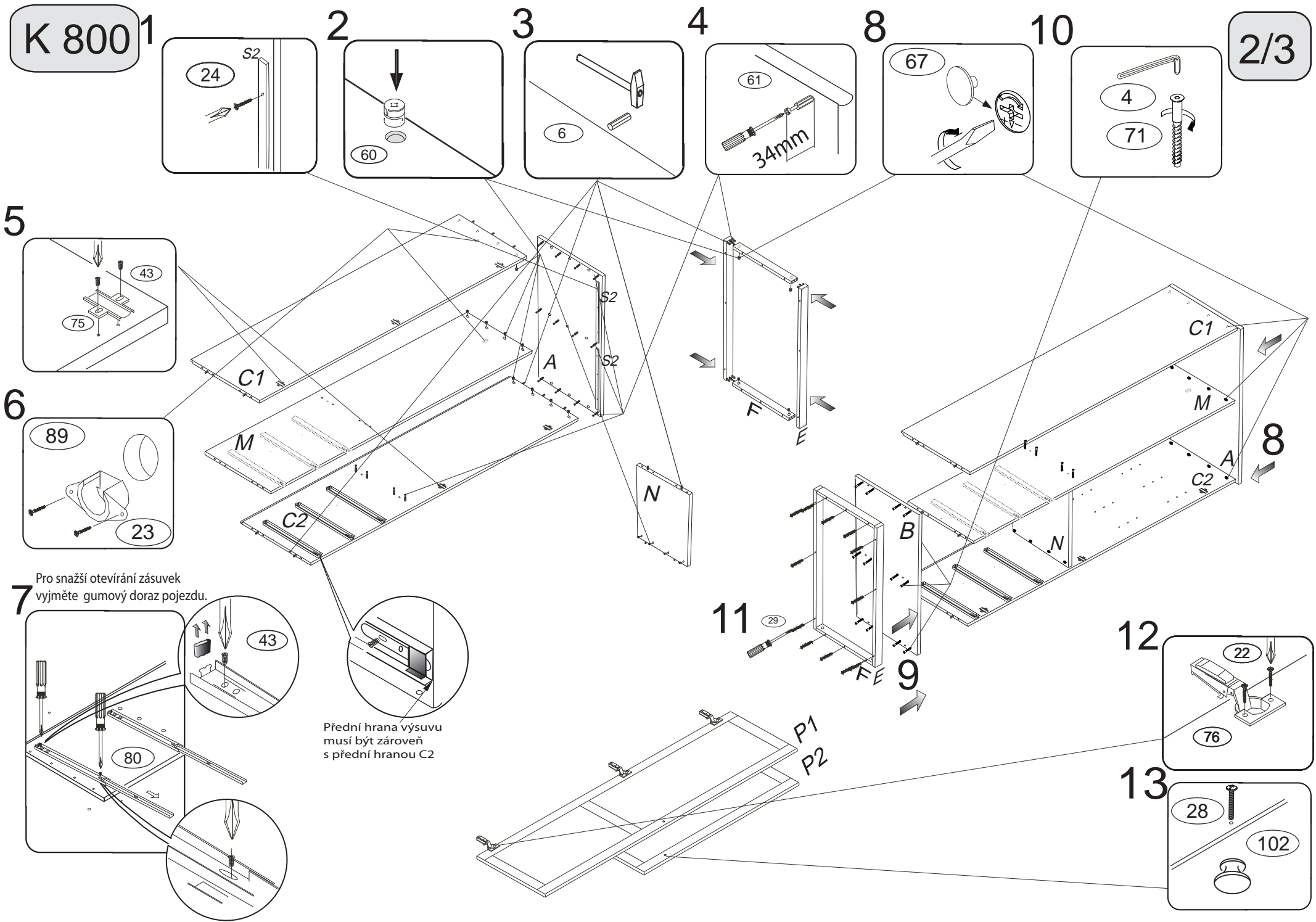
Kolíky vždy narazte nejprve do otvorů ve hranách dílců, je nutné je zarazit se stejným přesahem. V případě, že některý kolík přesahuje, je nutné jej zakrátit. Dílce srážejte kladivem pouze přes dřevěnou podložku.

1/3

	3 x1 	4 x1 	6 x45 	21 x18 	22 x10 	23 x4 	24 x8 		
28 x5 	29 x12 	43 x28 	60 x20 	61 x20 	67 x6 	68 x18 	69 x18 	70 x12 	
71 x16 	76 	75 x5 	C01 	80+81 x3 	85 x12 	87 x12 	89 x2 	92 x50 	102 x5



DOMESTAV
s.r.o.



1

24

S2

2

60

3

6

4

61

34mm

8

67

10

4

71

5

43

75

6

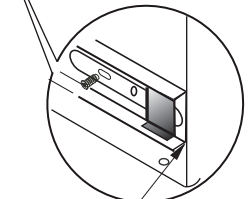
89

23

7

43

80



Přední hrana výsuvu musí být zároveň s přední hranou C2

11

29

9

12

22

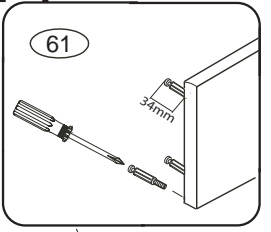
76

13

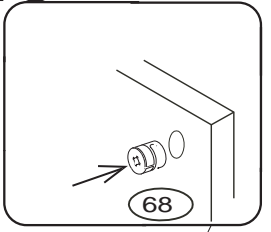
28

102

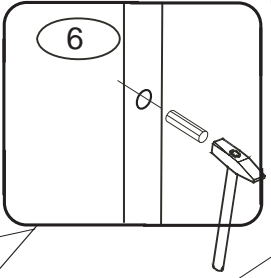
14



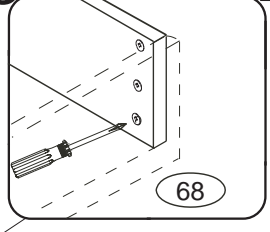
15



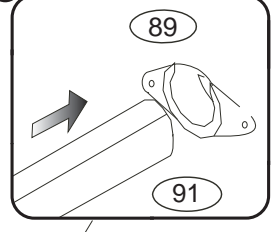
16



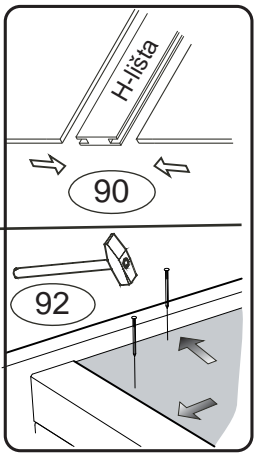
18



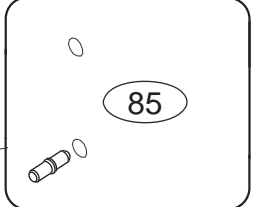
23



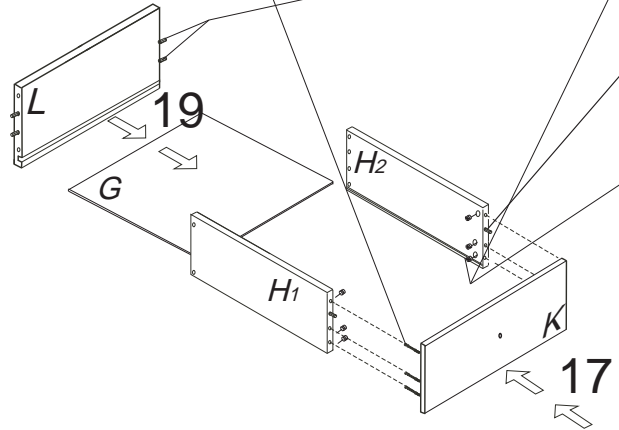
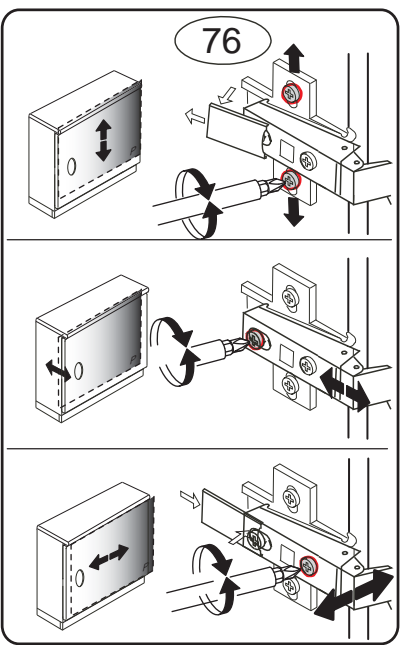
24



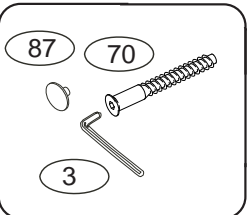
25



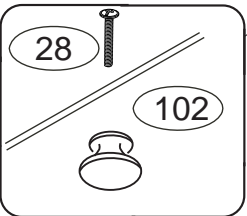
26



21



22



26

